

DRYVIT FEDDERLITE® AND OUTSULATION® CONVENTIONAL PANEL

PREFABRICATED EXTERIOR INSULATION AND FINISHING SYSTEMS

Dryvit's Fedderlite and Outsulation Conventional Panel are prefabricated exterior insulation and finishing systems (EIFS) offering fast track installation for use on either new construction or refurbishment projects. Like site applied Outsulation® these prefabricated systems are based on a simple premise...insulation is more effective when placed on the exterior of a building.

By bringing insulation to the outside of external walls, these prefabricated panelised EIFS eliminate thermal bridges; stabilise interior environments; minimise thermal shock; and build upon the proven weatherability of Outsulation.

Dryvit prefabricated systems have a proven track record fitting well with the Egan philosophy and the ethos of 'design and build' procurement. In construction, time means money. The faster your building is completed, the earlier it can be occupied and your revenue stream can start. Ultimately these systems enable building owners to determine more accurate project costing based on defined parameters.



Manufacture



Transport



Install

Royal Palm Office Building

BENEFITS

- **Fast track.** The panel systems enable rapid installation unhindered by environmental conditions that would normally affect traditional building methods. Panels can be installed off mast climbers or mobile towers, reducing access time and cost.
- **Design freedom.** Both systems can be installed over a variety of substrates. Expanded polystyrene (EPS) insulation is lightweight and can be cut or grooved to various shapes and surface patterns.
- **Energy efficiency.** Fedderlite and Outsulation Conventional Panel enable new or existing buildings to meet strict energy efficiency requirements. Heating or cooling costs are demonstrably lower in lieu of other exterior materials.
- **Lightweight.** Panels weigh less than brick, stone or precast concrete thus they limit imposed loading on existing and new build structures. Despite their lightweight nature the panels are capable of withstanding critical wind and structural loads.
- **Versatile.** Dimensional adjustments can be made easily and inexpensively right up to panel assembly time. Of great advantage in retrofit or new build projects.
- **Weatherability.** Dryvit systems are formulated to provide the utmost in weather protection providing a resilient barrier against the elements.
- **Durability.** The combination of system components provide unsurpassed long-term durability meeting design requirements for use in virtually any location.
- **Aesthetics.** Dryvit finishes are available in a wide array of textures in both standard and custom colours. Our speciality finishes enable designers to replicate a variety of real stone or brick finishes from limestone to granite at a fraction of the cost.
- **Cost effective.** Fedderlite and Outsulation Conventional Panel are adaptable to complex project details. Installation is rapid, and routine maintenance is minimal.
- **Testing.** Independently certified by international test bodies. Dryvit manufacturing plants are ISO 9001:2000 certified, demonstrating the highest standards of quality and consistency.



DRYVIT FEDDERLITE® SYSTEM:

A prefabricated EIFS panel system incorporating EPS 70E grade expanded polystyrene (EPS) insulation. A drainage cavity can be accommodated in the system if called for in the specification. NBS Specification Clause - M21

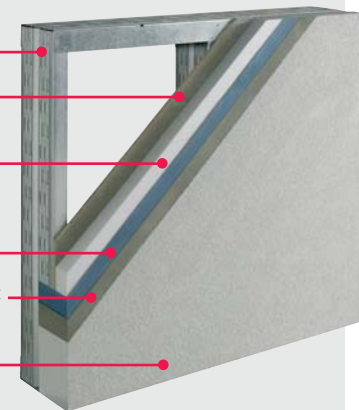
1. Fixing Method – Genesis™ or AP Adhesive and/or mechanical fix. (Depending on substrate and cavity requirements)
2. Channel – this provides a mechanism for handling and fastening the panel
3. Expanded Polystyrene Insulation (Mineral Wool please consult Dryvit UK)
4. Dryvit Reinforcing Mesh – Glass Fibre – weight/s depending on impact resistance
5. Dryvit Genesis™ or NCB™ base coat
6. Dryvit PMR finish – from standard or speciality finish ranges



DRYVIT OUTSULATION® CONVENTIONAL PANEL:

A prefabricated EIFS whole wall panel system incorporating a lightweight structural steel stud frame, sheathing and EPS 70E grade expanded polystyrene (EPS) or mineral wool insulation. NBS Specification Clause – H92

1. Lightweight steel frame
2. Sheathing board
3. Expanded Polystyrene or Mineral Wool Insulation
4. Dryvit Reinforcing Mesh – Glass Fibre – weight/s depending on impact resistance
5. Dryvit Genesis™ or NCB™ base coat
6. Dryvit PMR finish – from standard or speciality finish ranges



SUBSTRATE TYPES

Fedderlite panels can be installed on wide range of sheathings over steel or timber frame structures and may be fixed adhesively and/or mechanically fastened. The panels can also be installed over in-situ concrete, pre-cast concrete, blockwork, brick, render, Wimpey No-fines, and exposed aggregate panels.

Outsulation Conventional Panel whole wall panels can be connected to structural steel or concrete frame structures from inside the building by welding, bolting, mechanical fasteners or a combination of fixing methods.

For guidance on substrate tolerance and the correct fixing method to withstand thermal stresses and wind pressures (including suction) to satisfy BS 6399: Part 2 please consult Dryvit UK Ltd.

APPLICATION

Application of the systems are carried out by Specialist Installers employing operatives who have been trained in the use of Dryvit materials. In addition Dryvit are committed to providing on site support to their network of Specialist Installers when called upon.

Details of recommended Specialist Installers are available from Dryvit UK Ltd.

THERMAL PERFORMANCE

U-value and condensation risk calculations are carried out by Dryvit upon request to ensure that the correct thickness of insulation is specified for each project to meet target requirements. U-values calculations can then be incorporated within the buildings target SAP calculation.

Thermal resistivity values of insulation
Expanded polystyrene - 0.038 W/mK
Mineral Wool - 0.036 – 0.040 W/mK

STANDARD DETAILS

Standard details are available for both Fedderlite® and Outsulation® Conventional Panel systems and can be downloaded from www.dryvit.co.uk.

Dryvit offers a CAD service to produce bespoke details in line with specific project needs.

FINISHES

Dryvit 100% acrylic finishes contain quartz aggregates of various sizes and use Dirt Pickup Resistant (DPR) and Proven Mildew Resistance (PMR™) chemistry, ensuring the highest standard of fade resistance and ensuring low maintenance.

The standard finish range is available in five different textures with over 360 chart colours to select from. If your desired colour is not available from our standard finish range then we have a colour matching service that will be sure to satisfy your requirements. Even the look of natural stone, granite and brick is possible from our range of speciality finishes.

STANDARD TEXTURE RANGE



CUSTOM BRICK™



LYMESTONE™



TERRANEO®



WARRANTY



- Standard 10 Year "Dryvit Warranty" available on all projects upon written request.
- 10 Year third party insurance backed warranties covering materials and installation –extended periods available.
- 'Back to Back' warranties available on request from partnering material suppliers and installers.

For more information on warranties please contact Dryvit UK Ltd. Or visit our web site www.dryvit.co.uk.

DRYVIT UK LTD

Unit 4 Wren Park, Hitchin Road,
Shefford, Bedfordshire SG17 5JD

Tel: 01462 819555 Fax: 01462 819556

Email: ukenquiries@dryvit.com www.dryvit.co.uk

Printed in the UK R1: 10/05
©Dryvit UK Ltd. 2005



An RPTM Company