

# DRYVIT OUTSULATION® PLUS AND OUTSULATION RAIL™

## MOISTURE DRAINAGE EXTERIOR INSULATION AND FINISHING SYSTEMS

Dryvit's Outsulation Plus and Outsulation Rail are moisture drainage exterior insulation and finishing systems (EIFS) suitable for use on either new construction or refurbishment projects. As with Outsulation® these systems are based on a simple premise...insulation is more effective when placed on the exterior of a building.

Due to the increased demands for wall systems to be able to drain away incidental moisture, Outsulation Plus and Outsulation Rail have been developed to incorporate a moisture drainage plane and drained cavity, respectively.

By bringing insulation to the outside of external walls, these moisture drainage EIFS eliminate thermal bridges; stabilise interior environments; minimise thermal shock; and expand upon the proven weatherability of Outsulation by adding a second line of defence against air, moisture and weather.



Harbour Views



Glasgow Harbour

## BENEFITS

- **Design freedom.** Both systems can be installed over a variety of substrates. Expanded polystyrene (EPS) insulation is lightweight and can be cut or grooved to various shapes and surface patterns.
- **Energy efficiency.** Outsulation Plus and Outsulation Rail enable new or existing buildings to meet strict energy efficiency requirements. Heating or cooling costs are demonstrably lower in lieu of other exterior materials.
- **Air & Moisture Barrier.** Dryvit's Backstop NT™ weather-resistive membrane prevents water penetration and eliminates air infiltration. Unlike traditional woven sheet breather membranes it enables adhesive fix of the Outsulation Plus system and offers a faster and unhindered installation of the Outsulation Rail holding track over sheathed substrates.
- **Moisture Drainage System.** Both systems have moisture drainage detailing which will evacuate incidental moisture that may enter the building envelope at terminations or penetrations.
- **Weatherability.** Dryvit products are formulated to provide the utmost in weather protection providing a resilient barrier against the elements.
- **Durability.** The combination of system components provide unsurpassed long-term durability meeting design requirements for use in virtually any location.
- **Aesthetics.** Dryvit finishes are available in a wide array of textures in both standard and custom colours. Our speciality finishes enable designers to replicate a variety of real stone or brick finishes from limestone to granite at a fraction of the cost.
- **Cost effective.** Outsulation Plus and Outsulation Rail are adaptable to complex project details. Installation is rapid, and routine maintenance is minimal.
- **Testing.** Independently certified by international test bodies. Dryvit manufacturing plants are ISO 9001:2000 certified, demonstrating the highest standards of quality and consistency.

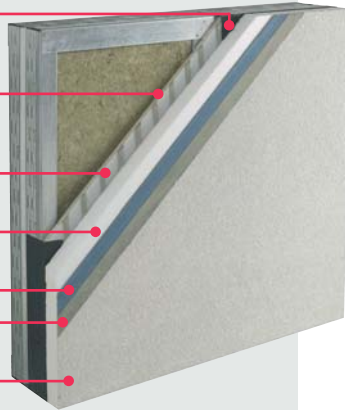
Canning Circus



## DRYVIT OUTSULATION® PLUS SYSTEM:

A high-performance EIFS with a moisture drainage plane incorporating an air & moisture protective membrane (where required) and grooved EPS 70E grade expanded polystyrene (EPS) insulation. NBS Specification Clause - M21

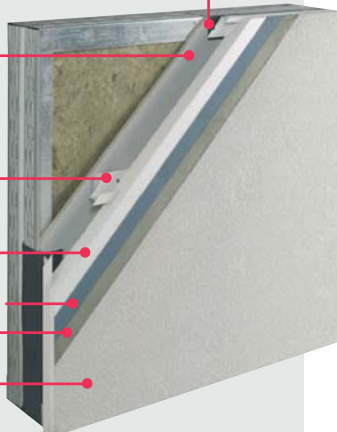
1. Dryvit AquaFlash™ or Flashing Tape™ to opening terminations
2. Backstop NT™ – air and moisture barrier to substrate (where required)
3. Genesis™ adhesive channels form drainage plane enabling evacuation of incidental moisture
4. Expanded Polystyrene or Mineral Wool Lamella Insulation
5. Dryvit Reinforcing Mesh – Glass Fibre – weight/s depending on impact resistance
6. Dryvit Genesis™ or NCB™ base coat
7. Dryvit PMR finish – from standard or speciality finish ranges



## DRYVIT OUTSULATION RAIL SYSTEM™:

A mechanically fastened rail EIFS, with a drained cavity, sized to meet project requirements, incorporating an air & moisture protective barrier (where required) and EPS 70E grade expanded polystyrene (EPS) insulation. NBS Specification Clause - M21

1. Dryvit AquaFlash™ or Flashing Tape™ to opening terminations
2. Backstop NT™ – air and moisture barrier to substrate (where required)
3. PVC holding track rails mechanically fixed to the substrate. Sized PVC shims used to create drained cavity enabling evacuation of incidental moisture
4. Expanded Polystyrene or Mineral Wool Insulation – grooved to fit onto holding track
5. Dryvit Reinforcing Mesh – Glass Fibre – weight/s depending on impact resistance
6. Dryvit Genesis™ or NCB™ base coat
7. Dryvit PMR finish – from standard or speciality finish ranges



## SUBSTRATE TYPES

The Outsulation Plus and Outsulation Rail systems are ideal for use on lightweight steel or timber framed structures where there is a requirement for a drainage plane or drained cavity or over solid substrates in new build or retrofit construction. Outsulation Rail is also suitable for installation over damaged or brittle substrates with irregular surfaces.

There are many construction materials, which can be utilised as effective substrates and common substrates include a wide range of sheathings carried on both timber and light gauge steel stud, in-situ concrete, pre-cast concrete, blockwork, brick, render, Wimpey No-fines, and exposed aggregate panels.

For guidance on substrate tolerance and the correct fixing method to withstand thermal stresses and wind pressures (including suction) to satisfy BS 6399: Part 2 please consult Dryvit UK Ltd.

## DRYVIT UK LTD

Unit 4 Wren Park, Hitchin Road,  
Shefford, Bedfordshire SG17 5JD

Tel: 01462 819555 Fax: 01462 819556

Email: [ukenquiries@dryvit.com](mailto:ukenquiries@dryvit.com) [www.dryvit.co.uk](http://www.dryvit.co.uk)

Printed in the UK R1: 10/05  
©Dryvit UK Ltd. 2005

## APPLICATION

Application of the systems are carried out by Specialist Installers employing operatives who have been trained in the use of Dryvit materials. In addition Dryvit are committed to providing on site support to their network of Specialist Installers when called upon.

Details of recommended Specialist Installers are available from Dryvit UK Ltd.

## THERMAL PERFORMANCE

U-value and condensation risk calculations are carried out by Dryvit upon request to ensure that the correct thickness of insulation is specified for each project to meet target requirements. U-values calculations can then be incorporated within the buildings target SAP calculation.

Thermal resistivity values of insulation

Expanded polystyrene - 0.038 W/mK

Mineral Wool - 0.036 – 0.040 W/mK

## STANDARD DETAILS

Standard details are available for both Outsulation Plus and Outsulation Rail systems and can be downloaded from [www.dryvit.co.uk](http://www.dryvit.co.uk).

Dryvit offers a CAD service to produce bespoke details in line with specific project needs.

## FINISHES

Dryvit 100% acrylic finishes contain quartz aggregates of various sizes and use Dirt Pickup Resistant (DPR) and Proven Mildew Resistance (PMR™) chemistry, ensuring the highest standard of fade resistance and ensuring low maintenance.

The standard finish range is available in five different textures with over 360 chart colours to select from. If your desired colour is not available from our standard finish range then we have a colour matching service that will be sure to satisfy your requirements. Even the look of natural stone, granite and brick is possible from our range of speciality finishes.

### STANDARD TEXTURE RANGE



CUSTOM BRICK™



LYMESTONE™



TERRANEO®



## WARRANTY



- Standard 10 Year "Dryvit Warranty" available on all projects upon written request.
- 10 Year third party insurance backed warranties covering materials and installation – extended periods available.
- 'Back to Back' warranties available on request from partnering material suppliers and installers.

For more information on warranties please contact Dryvit UK Ltd. Or visit our web site [www.dryvit.co.uk](http://www.dryvit.co.uk).